



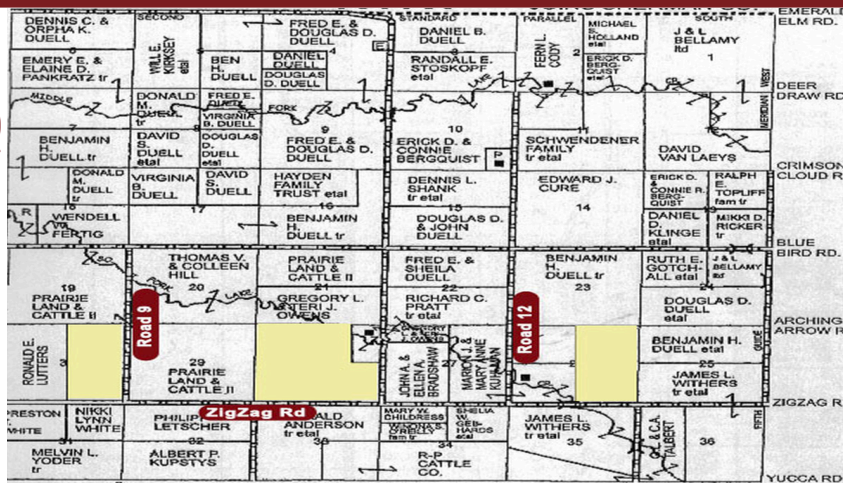
<https://goodlandhomestead.com/listing/HR10232>

Wallace County, KS



Listing #HR10232

**\$2,382,833**



1149.66 acres located 6 miles West of Hwy 27 in Wallace Co. KS. West of Hwy 27 on ZigZag Road in Wallace County  
 - E2 26-11-41 has 323.21 acres priced at \$2500 per acre Wheat Base: 159.7 Grain Sorghum Base: 8.5 Taxes: 2023 \$1590.28 - 508.47 acres in 28-11-41 priced at \$2200 per acre Wheat Base: 257.3 Grain Sorghum Base: 13.50 Taxes: 2023 \$2445.60 - E2 30-11-41 has 215.42 acres cropland and 97.46 acres CRP priced at \$1471 per acre 215.42 Acres DCP Cropland 97.46 Acres CRP Through 2031 (\$3475/yr) 5.1 Acres Grass Wheat Base: 154.0 Grain Sorghum Base: 8.2 Taxes: 2023 \$1367.00

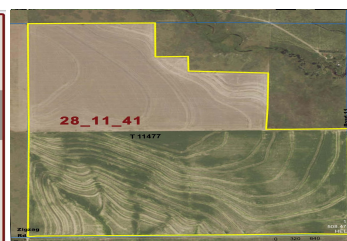


#### 323.21 acres crop land

WHEAT BASE 159.7  
GRAIN SORGHUM BASE 8.5

#### TAXES:

PRICE: \$808,025 (\$2500.00/AC)



#### 508.47 acres crop land

WHEAT BASE 257.3  
GRAIN SORGHUM BASE 13.50

#### TAXES: 20

PRICE: \$1,118,634 (\$2200.00/AC)

Type: Farm Land

Lot Size: 0.03 Acres

**312.88 Acres crop land**  
**215.42 ACRES DCP CROPLAND**  
**97.46 ACRES CRP THROUGH 2031**  
**+ 5.1 ACRES GRASS**

WHEAT BASE 154.0  
GRAIN SORGHUM BASE 8.2

**CRP PAYMENTS: \$35.66/AC (\$3475)**

**TAXES:**

**PRICE: \$ 456,174 (\$1471.00/AC)**



The information is being provided through the Goodland Multiple Listing Service Internet Data Exchange Program. Information Is Believed To Be Accurate But Not Guaranteed. Information is provided for consumers' personal, non-commercial use, and may not be used for any purpose other than the identification of potential properties for purchase. All Rights Reserved.



1023 Main Street  
Goodland, KS 67735

(785) 899 - 2328  
(800) 974 - 2426

[www.GoodlandHomestead.com](http://www.GoodlandHomestead.com)  
[realtor@goodlandhomestead.com](mailto:realtor@goodlandhomestead.com)



The information is being provided through the Goodland Multiple Listing Service Internet Data Exchange Program. Information Is Believed To Be Accurate But Not Guaranteed. Information is provided for consumers' personal, non-commercial use, and may not be used for any purpose other than the identification of potential properties for purchase. All Rights Reserved.



1023 Main Street  
Goodland, KS 67735

(785) 899 - 2328  
(800) 974 - 2426

[www.GoodlandHomestead.com](http://www.GoodlandHomestead.com)  
[realtor@goodlandhomestead.com](mailto:realtor@goodlandhomestead.com)