



<https://goodlandhomestead.com/listing/16679>

## 1125 Wheatridge Rd.

Colby, KS

3

3

2,406

Listing #16679

**\$289,000**



Welcome to this charming 3 bedroom home with the potential for a 4th bedroom, offering a perfect blend of comfort and functionality. The updated kitchen features a convenient breakfast counter, ideal for casual dining, and the main eating area with a beautiful view of the fenced-in backyard. The barnyard pantry doors add a rustic touch and provide ample storage space. Step into the spacious family room, with a cozy wood-burning fireplace, creating a warm and inviting atmosphere. The lower level holds two bedrooms, each with a sink offering convenience and joined with a Jack-N-Jill bathroom. The main bedroom is a peaceful retreat with sliding glass doors that open to a private deck, perfect for enjoying your morning coffee or evening sunset. The full master bathroom adds a luxurious touch to your personal space.



**Type:** Single Family Res.

**Style:** Contemporary

**Year Built:** 1978

☒ Covered Patio,Porch

**Price/Sq.Ft.:** \$120.12

**Lot Size:** 0.28 Acres

**Lot Dimentions:** 100x120

☒ 2 Car Garage

☒ Storage Building

**Heating:** Gas,Central Heat

**Cooling:** Central Air/Refrig

**Taxes:** \$3,603.44

☒ City Water

☒ Sewer City

The information is being provided through the Goodland Multiple Listing Service Internet Data Exchange Program. Information Is Believed To Be Accurate But Not Guaranteed. Information is provided for consumers' personal, non-commercial use, and may not be used for any purpose other than the identification of potential properties for purchase. All Rights Reserved.

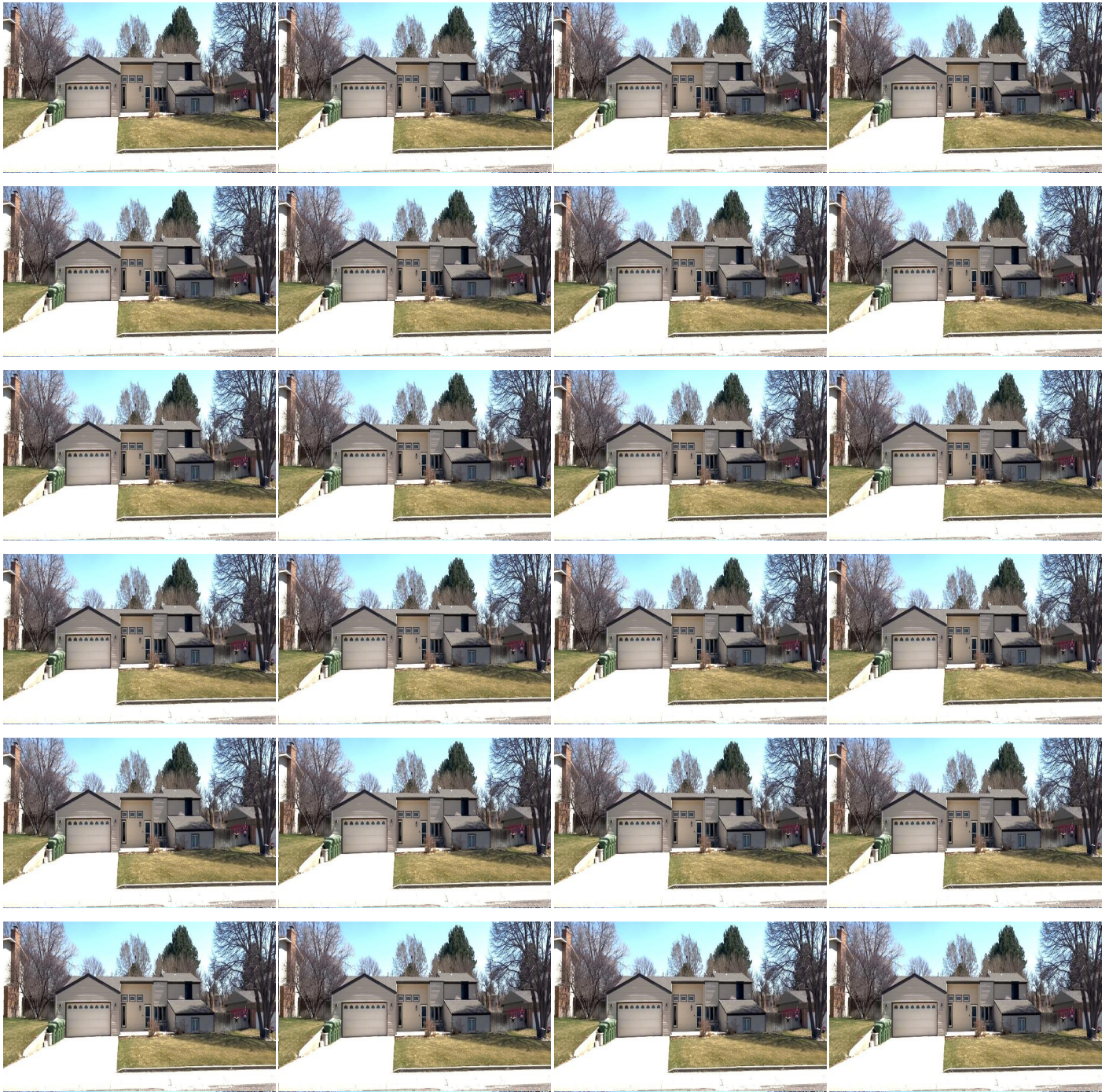


1023 Main Street  
Goodland, KS 67735

(785) 899 - 2328  
(800) 974 - 2426

[www.GoodlandHomestead.com](http://www.GoodlandHomestead.com)  
[realtor@goodlandhomestead.com](mailto:realtor@goodlandhomestead.com)





The information is being provided through the Goodland Multiple Listing Service Internet Data Exchange Program. Information Is Believed To Be Accurate But Not Guaranteed. Information is provided for consumers' personal, non-commercial use, and may not be used for any purpose other than the identification of potential properties for purchase. All Rights Reserved.



1023 Main Street  
Goodland, KS 67735

(785) 899 - 2328  
(800) 974 - 2426

[www.GoodlandHomestead.com](http://www.GoodlandHomestead.com)  
[realtor@goodlandhomestead.com](mailto:realtor@goodlandhomestead.com)