



<https://goodlandhomestead.com/listing/16622>

## 1720 Nighthawk Rd.

Sharon Springs, KS

4

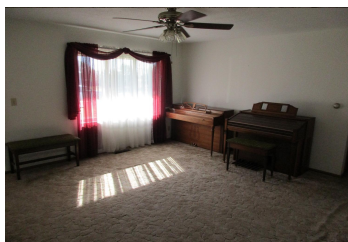
3

3,032

Listing #16622



If you have ever wanted to live in the country but be close to town, don't pass up this opportunity to look at this four bedroom, three bath Ranch style home. House sits on approximately 2 acres with one acre being a vacant lot with lots of possibilities to build another house or a big shop. Home has been well maintained and has a 60x40 Quonset, with mature landscaping to include numerous trees and is out of the city limits.7253.



**Type:** Single Family Res.

**Style:** Ranch

**Year Built:** 1965

**Price/Sq.Ft.:** \$98.45

**Lot Size:** 1.97 Acres

**Lot Dimentions:** 1.97 Acres

**Heating:** Gas,Central Heat

**Cooling:** Central Air/Refrig

**Taxes:** \$2,407.84

☒ Porch

☒ 2 Car Garage

☒ Domestic Well

☒ Septic



### Room Sizes:

#### 1<sup>st</sup> Level

Bath 1 : 7 x 5  
Bath 2 : 8.6 x 4  
Bedroom 1 : 10.9 x 10.9  
Bedroom 2 : 13.3 x 10.5  
Bedroom 3 : 14.3 x 13.3  
Family Room : 23.5 x 11  
Kitchen : 13 x 8.7  
Living Room : 15.3 x 13.9

#### Basement Level

Bath 3 : 8.6 x 5  
Bedroom 4 : 14.2 x 13.9  
Rec Room : 35 x 27.4

### Appliances Included:

Dishwasher  
Refrigerator  
Range  
Oven  
Ceiling Fans  
Window Coverings  
Garbage Disposal

IDX courtesy of:  
Realtor.Com

The information is being provided through the Goodland Multiple Listing Service Internet Data Exchange Program. Information Is Believed To Be Accurate But Not Guaranteed. Information is provided for consumers' personal, non-commercial use, and may not be used for any purpose other than the identification of potential properties for purchase. All Rights Reserved.



1023 Main Street  
Goodland, KS 67735

(785) 899 - 2328  
(800) 974 - 2426

[www.GoodlandHomestead.com](http://www.GoodlandHomestead.com)  
[realtor@goodlandhomestead.com](mailto:realtor@goodlandhomestead.com)



The information is being provided through the Goodland Multiple Listing Service Internet Data Exchange Program. Information Is Believed To Be Accurate But Not Guaranteed. Information is provided for consumers' personal, non-commercial use, and may not be used for any purpose other than the identification of potential properties for purchase. All Rights Reserved.



1023 Main Street  
Goodland, KS 67735

(785) 899 - 2328  
(800) 974 - 2426

[www.GoodlandHomestead.com](http://www.GoodlandHomestead.com)  
[realtor@goodlandhomestead.com](mailto:realtor@goodlandhomestead.com)