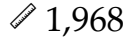




<https://goodlandhomestead.com/listing/16519>

## 338 North Penn Ave.

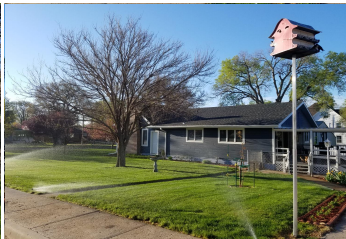
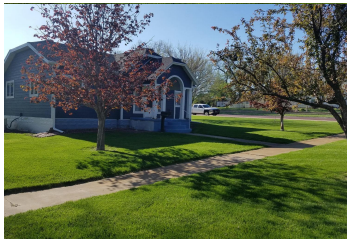
Oberlin, KS



Listing #16519



This house has many updates inside and out. The house and garage roof, guttering and downspouts were all replaced in 2022. LP Smartside trim and siding were added in 2020 and are virtually maintenance free. The siding and trim are molded in color and do not require painting. This product is warranted not to fade, chip, or peel for 30 years. It is also warranted for substrate and hail damage for 50 years! All eaves and soffits were wrapped with aluminum in 2020. This roomy bungalow style home has three (3) bedrooms (that includes an oversized private owner suite), two (2) updated baths, a main floor laundry, and a 27'4 X 13'6 living room that features a gas fireplace with brick surround and tile hearth. The spacious 31'3 X 11'7 eat-in kitchen includes a 10 ft. island and plenty of storage with updated (2019) Maytag stainless steel appliances. The layout of this home creates an optimal flow with a place for everything. In addition, there is newer flooring throughout.



**Type:** Single Family Res.

**Style:** Bungalow

**Year Built:** 1924

☒ Covered Patio

**Price/Sq.Ft.:** \$86.38

**Lot Size:** 0.21 Acres

**Lot Dimentions:** 75 X 120

☒ 2 Car Garage

**Heating:** Central Heat

**Cooling:** Central Air/Refrig

**Taxes:** \$2023 Taxes = 2,564.43

☒ City Water

☒ Sewer City

The information is being provided through the Goodland Multiple Listing Service Internet Data Exchange Program. Information Is Believed To Be Accurate But Not Guaranteed. Information is provided for consumers' personal, non-commercial use, and may not be used for any purpose other than the identification of potential properties for purchase. All Rights Reserved.

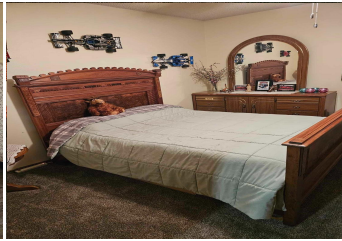
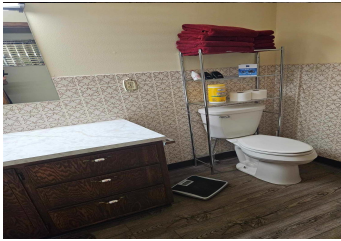
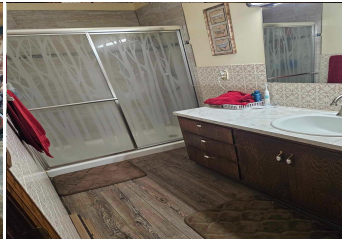


1023 Main Street  
Goodland, KS 67735

(785) 899 - 2328  
(800) 974 - 2426

[www.GoodlandHomestead.com](http://www.GoodlandHomestead.com)  
[realtor@goodlandhomestead.com](mailto:realtor@goodlandhomestead.com)





## Room Sizes:

### 1<sup>st</sup> Level

Bath 1 : 5 x 11.67

Bath 2 : 5 x 14

Bedroom 1 : 17.17 x 19.75

Bedroom 2 : 11.92 x 9.75

Bedroom 3 : 11.83 x 12

Kitchen : 31.25 x 13.5

Living Room : 27.33 x 11.58

Utility Room : 13.58 x 8

## Appliances Included:

Dishwasher

Garbage Disposal

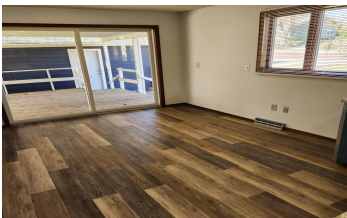
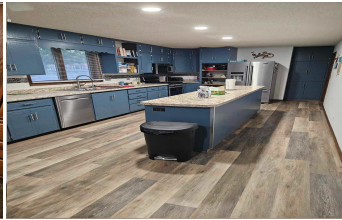
Refrigerator

Range

Hood

IDX courtesy of:

Home Range Real Estate



The information is being provided through the Goodland Multiple Listing Service Internet Data Exchange Program. Information Is Believed To Be Accurate But Not Guaranteed. Information is provided for consumers' personal, non-commercial use, and may not be used for any purpose other than the identification of potential properties for purchase. All Rights Reserved.



1023 Main Street  
Goodland, KS 67735

(785) 899 - 2328  
(800) 974 - 2426

[www.GoodlandHomestead.com](http://www.GoodlandHomestead.com)  
[realtor@goodlandhomestead.com](mailto:realtor@goodlandhomestead.com)



The information is being provided through the Goodland Multiple Listing Service Internet Data Exchange Program. Information Is Believed To Be Accurate But Not Guaranteed. Information is provided for consumers' personal, non-commercial use, and may not be used for any purpose other than the identification of potential properties for purchase. All Rights Reserved.



1023 Main Street  
Goodland, KS 67735

(785) 899 - 2328  
(800) 974 - 2426

[www.GoodlandHomestead.com](http://www.GoodlandHomestead.com)  
[realtor@goodlandhomestead.com](mailto:realtor@goodlandhomestead.com)