



https://goodlandhomestead.com/listing/14484

# 425 North Gardner Ave.

Sharon Springs, KS

5

3

2,700

Listing #14484



2 car attached garage, small garage in back, under ground sprinklers. Great location within walking distance to school, grocery store, medical clinic, lumber yard, show building and court house. 2 restaurants and a convenience store round out this small quiet town. Must see to appreciate.



**Type:** Single Family Res.  
**Style:** Ranch  
**Year Built:** 1990

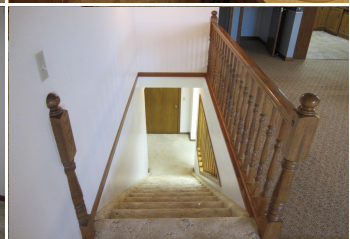
**Price/Sq.Ft.:** \$105.56  
**Lot Size:** 0.17 Acres

**Heating:** Gas,Central Heat  
**Cooling:** Central Air/Refrig  
**Taxes:** \$3,457

Patio

2 Car Garage  
 Storage Building

City Water  
 Sewer City



### Room Sizes:

#### 1<sup>st</sup> Level

- Bath 1 : 9 x 5
- Bath 2 : 8.5 x 6
- Bedroom 1 : 13 x 11
- Bedroom 2 : 13 x 11
- Bedroom 3 : 13 x 13
- Dining Room : 14 x 14
- Kitchen : 12 x 9
- Living Room : 17.6 x 15

#### 2<sup>nd</sup> Level

- Bath 3 : 9 x 8
- Bedroom 5 : 12.3 x 9

#### Basement Level

- Bedroom 4 : 15.9 x 14
- Family Room : 32.1 x 13.7
- Rec Room : 14 x 8
- Utility Room : 10.6 x 7.8

### Appliances Included:

- Dishwasher
- Garbage Disposal
- Ceiling Fans
- Window Coverings
- Hot Water Heater
- Other 1

IDX courtesy of:  
Harrison Realty & Auction

The information is being provided through the Goodland Multiple Listing Service Internet Data Exchange Program. Information Is Believed To Be Accurate But Not Guaranteed. Information is provided for consumers' personal, non-commercial use, and may not be used for any purpose other than the identification of potential properties for purchase. All Rights Reserved.



1023 Main Street  
Goodland, KS 67735

(785) 899 - 2328  
(800) 974 - 2426

[www.GoodlandHomestead.com](http://www.GoodlandHomestead.com)  
[realtor@goodlandhomestead.com](mailto:realtor@goodlandhomestead.com)



The information is being provided through the Goodland Multiple Listing Service Internet Data Exchange Program. Information Is Believed To Be Accurate But Not Guaranteed. Information is provided for consumers' personal, non-commercial use, and may not be used for any purpose other than the identification of potential properties for purchase. All Rights Reserved.



1023 Main Street  
Goodland, KS 67735

(785) 899 - 2328  
(800) 974 - 2426

[www.GoodlandHomestead.com](http://www.GoodlandHomestead.com)  
[realtor@goodlandhomestead.com](mailto:realtor@goodlandhomestead.com)